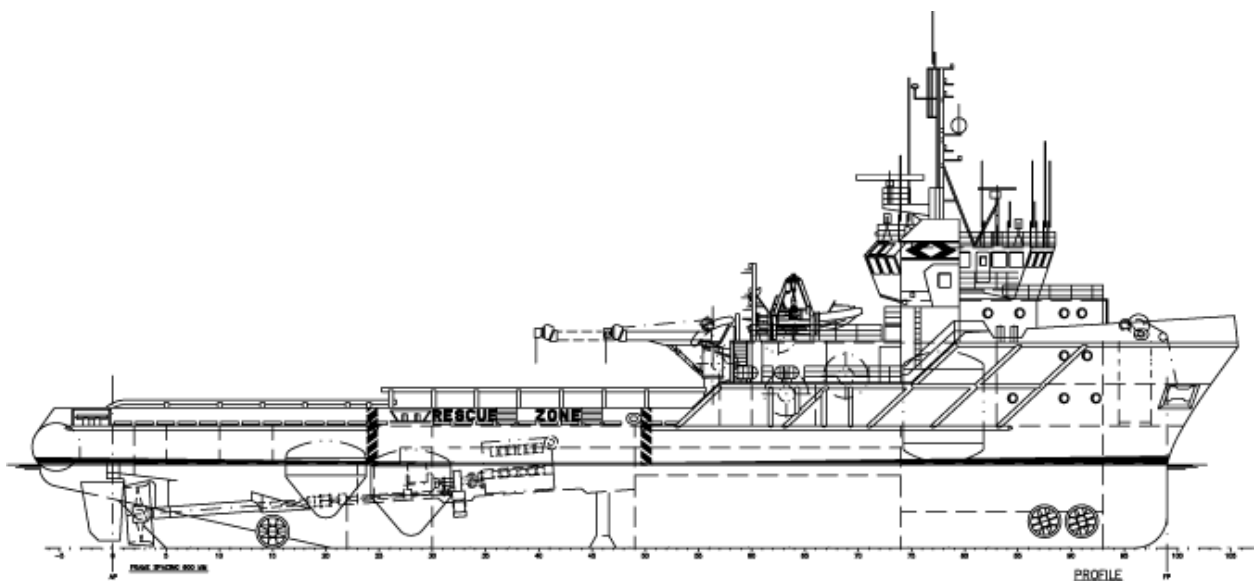
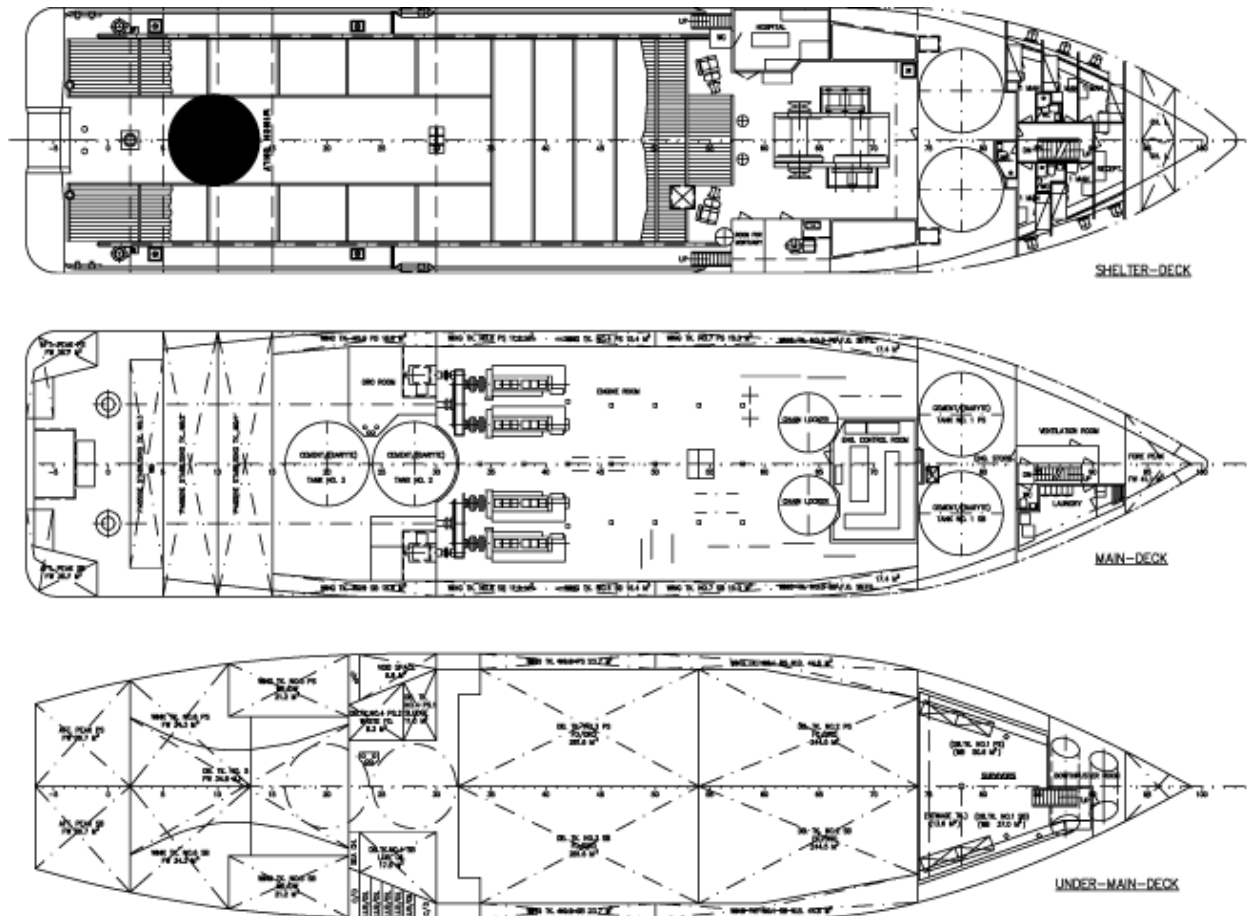




AHTS 'Beta'





CLASSIFICATION	
Det Norske Veritas: + 1A1 – Supply Vessel, SF, Tug, E0, Standby, Oilrec	
REGISTRATION DETAILS	
Builder	H. Surken, West Germany
Flag	Norwegian
Port	Bergen
Built	1982
GRT	1752
NRT	525
Call sign	LKSO
DIMENSIONS	
LOA	67,87 m
LBP	59,40 m
Breadth (MLD)	14,52 m
Draught (max summer)	5,01 m

Depth (MLD)	6,90 m
Freeboard	1,89 m
DWT	1217 mt
Displacement	2937 mt
Light weight	1720 mt
CARGO CAPACITIES	
Dry bulk	1 x 42 m ³
	1 x 50 m ³
	2 x 82,5 m ³
Fuel oil	1176 m ³
Pot water	262 m ³
Drill water	620 m ³ (stab tanks included)
Brine	N/A
Stabilizing tanks	3 x Ulstein, total 230 m ³ (passive)
CARGO-DECK CAPACITIES	
Deck area	35 x 11m
Deck strength	5 t/m ²
Deck load	720 mt
CARGO HANDLING EQUIPMENT	
Dry bulk	2 x 19 m ³ /min/5,6 bar/80 psi
Fuel oil	1 x 250 m ³ /h at 90 mwc
Pot water	1 x 100 m ³ /h at 90 mwc
Drill water	2 x 100 m ³ /h at 100 mwc
Brine	1 x 100 m ³ /h at 60 mwc
DECK MACHINERY	
Tugger winches	2 x 10 t Brattvaag Hydraulikk
Capstans	2 x 8,5 t Brattvaag Hydraulikk
Deck cranes	1 x 3,2 t Hydralift 10 m arm
	1 x 2,0 t Palfinger 8 m arm
MOORING EQUIPMENT	
Windlass	1 x Brattvaag hydraulikk B12-54, 16,5 t
Anchors	3 x 1920 kg, stockless
Anchor chain	2 x 499 m, 36 mm K3
TOWING AND ANCHOR HANDLING EQUIPMENT	
Towing/ah winch	1 x 250 t Brattvaag hydraulikk SL 250W/ 250 t (spooling device)
Winch drums	Double drum
Brake power	350 t
Rig chain gypsies	2 x 3 ¼" (optimal 3")
Rig chain lockers	2 x 40 m ³
Tow wire	1 x 1200 m 64 mm MBL 302 t
Work wire	1 x 650 m 71 mm MBL 360 t
Towing pins	1 set of Karpins

Shark jaw	1 x SWL 750 t – 1 x SWL 500 t
Stern roller	350 t SWL, 3,66 x 2,5 m
Chain Chaser	Bell 101
Grapple	Grapple, type G2
MACHINERY AND PROPULSION	
Main engines	4 x Wickmann 6AXAG/490 RPM
BHP	4 x 2640 total 10560
Propellers	2 x Ulstein var: pitch in kort nozzels-3100 mm dia.
Bollard pull at MCR	118 TBP
Bow thrusters	2 x 800 bhp thrust 2 x 9 t
Stern thruster	1 x 800 bhp thrust 1 x 9 t
Shaft generators	2 x Siemens, each 1256 kw at 1800 RPM, 450 VAC 60 Hz
Auxiliary engines	2 x Volvo Penta TAD 120BHC 6 cyl – 1800 RPM
Emergency engine	1 x Deutz (KDH) F 3L 912 6 cyl – 1800 RPM
Auxiliary generators	2 x Siemens FC 5352, each 250 kW @ 1800 RPM, 450 VAC, 60 Hz
Emergency generator	1 x Siemens FC 4204, 26 kW at 1800 RPM; 230 VAC, 60 Hz
Separators	2 x Alfa Laval MOPX 250 TGT-24-60
	2 x Alfa Laval MAB 205 S-24-60
Compressors	2 x Sperre H 12/120 each 59 m ³ /h – 30 bar starting air
SPEED / CONSUMPTION	
Range econ speed	abt 70 – 80 days
Max service speed	abt 15,5 knots/38 t
Econ service speed	abt 12 knots/11 t – 10 knots/10 t
	Stand by on location abt. 3,5 t
CONTROL AND NAVIGATION EQUIPMENT	
Radars	1 x Racal Decca 340, 10 cm
	1 x Furuno, FR 2115, 3 cm
Gyro compass	Robertson RGC 12
Magnetic compass	Neptun 10" Class A
GPS	Shipmate RS 5800
DGPS receiver	Shipmate RS 5660
	Magnavox MX 420
Electronic Chart	Telechart 2121
Direction finder	Taiyo ADDF TD-L 1520
Echo sounder	Simrad EQ 54
Speed log	Simrad NL Doppler log
Joystick	Ulstein
Rudders	2 x Ulstein, spade – type
Search lights	6 x NOAC HS 470
COMMUNICATION EQUIPMENT	
Radio station	2 x Inmarsat C Sailor H 2095
Satellite phone:	Nera Fleet 33

	Iridium ICHU 1000
MF/HF	Sailor RE 2100 + DSC
VHF	Sailor RT 2047/D + DSC
VHF	Sailor RT 2048 + DSC
VHF	3 x Raymarine RAY 54E
VHF	3 x Motorola GP 900 (EX)
VHF	Motorola GP 340 (EX)
VHF/AM	ICOM IC A3E
UHF	Motorola GP 300
UHF	5 x Motorola GP 340
Mobile phone	Nokia 32 GSM
Radio beacon	Skanti TU 8250 S
OIL RECOVERY EQUIPMENT	
Tank capacity	1052 m ³ , FO double bottom 2/3
Deepwell pumps	4 x Framo RBP-2-250D, each 500 m ³ /h at 25 MWC
Booster pumps	2 x Framo TK 7, each 500 m ³ /h at 25 MWC
NOFO	1987 approved
STANDBY AND RESCUE EQUIPMENT (Equipped according to new regulations 1992)	
Equipped for	150 persons
No. of beds	25
Reception	9 m ²
Treatment room	18 m ²
Sick bay	16 m ²
Rescue basket	1 x Bennex type
MOB – boats	1 x Alusafe 700 (waterjet)
Rescue nets	2 x rope nets
ACCOMMODATION	
12 x 1 man cabin	
Passengers 12 - 8 persons	
Crew 8 - 12 persons	
SAFETY AND LIFE SAVING EQUIPMENT	
Free Float Emergency Beacon	Cospas – Sarsat
Liferafts	4 x 20 persons
Survival Suits	21
VHF	3 x Tron vhf (GMDSS)
Radartransponder	Tron Sart 9 GHz Radartransponder
Portable Emergency beacon	Tron 45SX Cospas – Sarsat

All the above particulars are believed to be correct, but not guaranteed