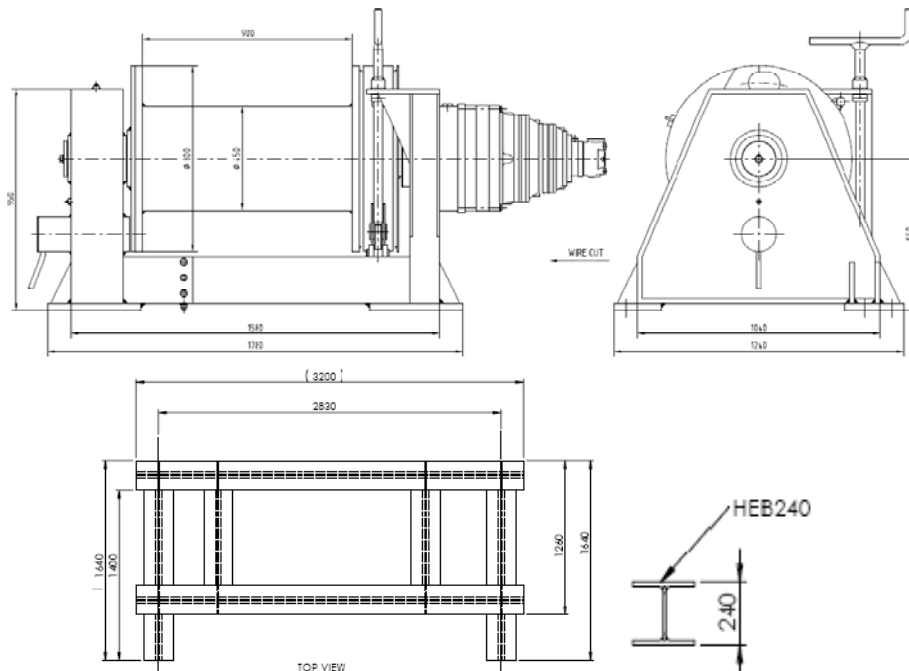




23 Tonnes Electrical Pull-in Winch



Technical specifications

Manufacturer:	Mjø Sundet båt
Motor/gear system:	OMT 200/ RR500 108
Drum:	D 800, d 450, L 900
Pull in capacity first layer:	23 Tonnes
Brakes:	50 T break/ 100 T lock
Weight:	1830 Kg (without wire)
Dimensions :	See above
Pull in speed:	4m/min

All the above particulars are believed to be correct, but not guaranteed