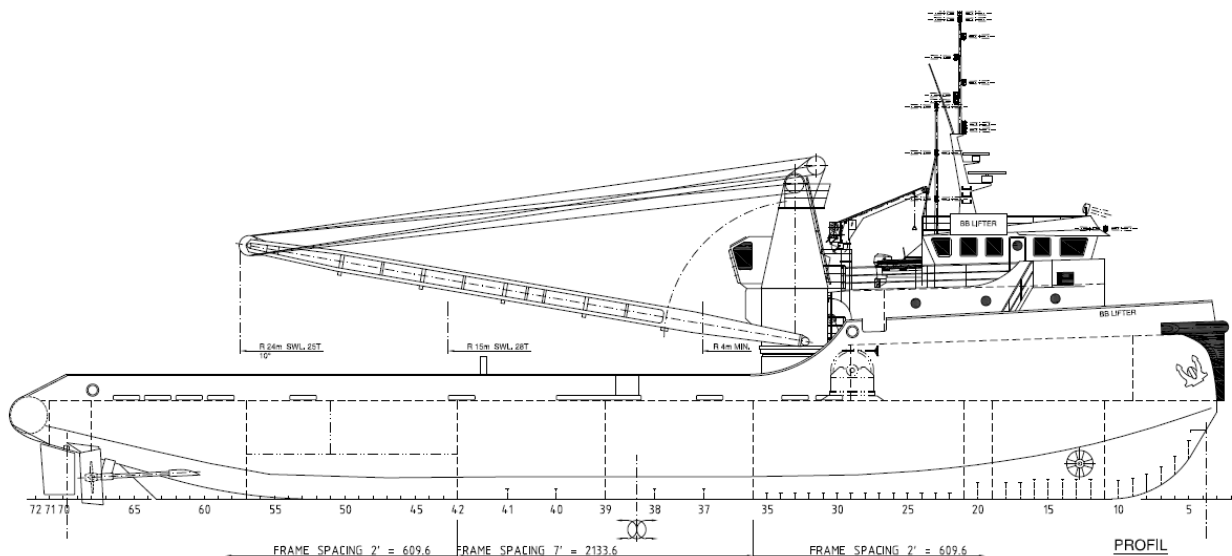
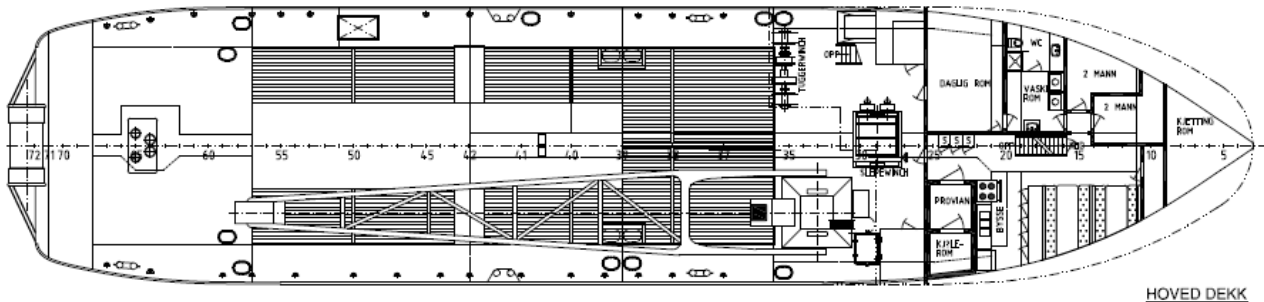


AHT 'BB Lifter'

Inshore work vessel for anchor handling, mooring support, lifting, transports and towage work




Main Capacities:

Type:	Twin screw w/pitch		Main engines:	2 x Caterpillar	
Built:	1973			2.500 bhp in total	
Call sign:	JXAS		Propulsion:	CPP	
IMO no.:	7319072		Auxiliaries:	450 kW	
Port of registration:	Haugesund		Bowthruster:	250 hp	
Class:	Bureau Veritas		Towing winch:	(rear roller) 60 tonnes	
Tonnage:	299/640 GRT		Crane:	28 t at 15m/25 t at 24 m	
Speed:	12 knots		Tugger winch:	3 drums, each 20 tonnes	
Cert Bollard pull.	30 TBP		Storage winch:	8 tonnes	
Main dimensions:	Loa	53.64 m	Shark jaw:	2 x Karmøy	
	Bmld	11.58 m	Towing pins:	Karmøy	
	Dmld	4.27 m	Deck:	Area	340 m ²
	Normal op.draft	3.5 m		Load	400 tonnes
Accommodation:	10 persons			Strength	5 t/m ²
MOB boat:	UFAS (Weedo 17 Solas)		Tank capacity:	Water	350 tonnes
				Gas Oil	240 tonnes

All the above particulars are believed to be correct, but not guaranteed