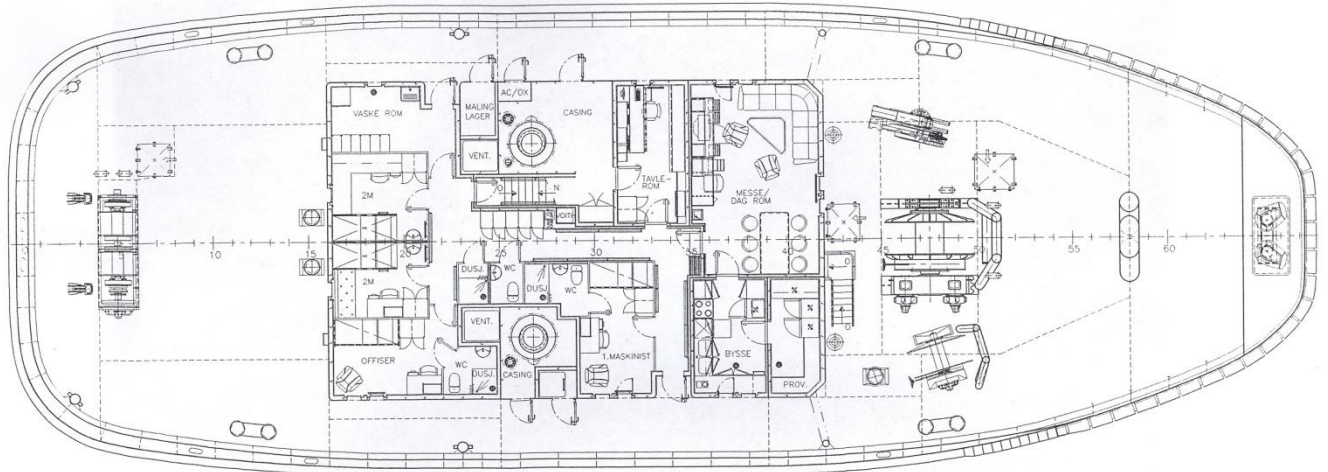


“Boris”





Type:	Voith Fin First Tractor	Main engines:	2 x Deutz SBV 16 M 628
Built:	2006		9.729 bhp in total
Call sign:	LNMS	Propulsion:	Voith 36R6/255-2
IMO no.:	9334753	Auxiliaries:	720 kW
Port of registration:	Hammerfest	Fire fighting:	2 x water / foam monitors
Class:	DNV +1A1 - E0 - Ice C – Tug – SF		2.800 m ³ /hr water
	FiFi I – Oilrec – Esc. (160t, 10kn)	Towing winch:	170 t pull, 300 t brake
Tonnage:	773 GRT	Deck equipment:	Forward tugger winch 8/50 t
Speed:	15 knots		Aft tugger/windlass 8/50 t
Bollard pull at MCR:	95 TBP		Deck crane 24 tm
Steering pull at 10 knots:	160 tonnes		Towing pins
Main dimensions:	Loa 40.55 m		
	Bmld 14.30 m		
	Dmld 5.14 m		
	Normal op.draft 6.00 m		

All the above particulars are believed to be correct, but not guaranteed