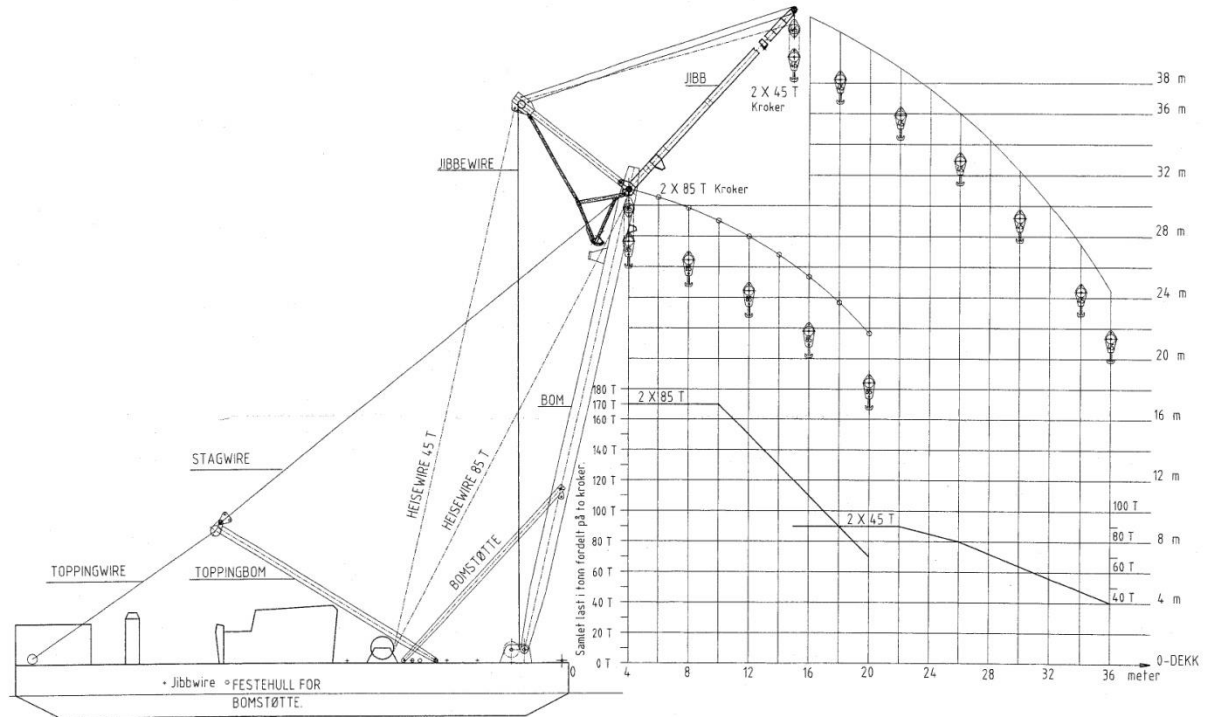


“Mammutkrana III”





Type:	Salvage crane	Lifting capacity:	170 tonnes main hooks
Built:	1968		90 tonnes jib hooks
Call sign:	LNIE	Additional equipment:	Ballastpump
Port of registration:	Ålesund		Firepump, Bilgepump,
Class:	GL + 100 A4K lifting ship/engine MC		Sewagepump, Hydrphorpumps
Tonnage:	590 GRT		Bunker transfer pump
Main dimensions:	Loa 38,59 m		Air compressor 200 kg/cm ²
	Bmld 16,49 m	Luffing winch:	2 x drums 18 tonnes
	Dmld 3,46 m	Hoisting winches:	14 t (2 sep. jib/main hoist)
	Normal op.draft 1,05-2,00 m		2 x anchor winches with chain hoist,
Propulsion:	Schottel Navigator Type Nav. 250		drums for mooring wire and ropes
	Deck-mounted w/250 HP Deutz Diesel		2 x winches of aux.hoist
	BFL712 and Nogva/Scania Diesel DS 9		and mooring wire
Bowthruster:	134 bhk		

All the above particulars are believed to be correct, but not guaranteed