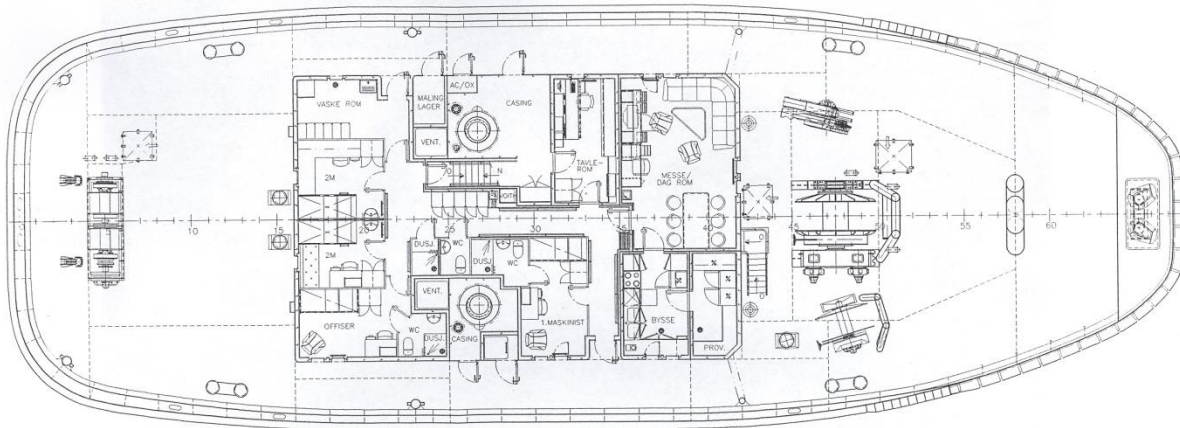


“Baut”





Type:	Voith Fin First Tractor	Main engines:	2 x Deutz SBV 16 M 628
Built:	2003		6.880 kW in total
Call sign:	LMJY	Propulsion:	2 x Voith 36R6/255-2
IMO no.:	9287041	Auxiliaries:	760 kW
Port of registration:	Bergen	Fire fighting:	2 x water / foam monitors
Class:	DNV +1A1 – E0 – Ice C – Tug – SF Fi Fi I – Oilrec – Esc. (160t, 10kn)	Towing winch:	2.820 m ³ /hr water
Tonnage:	741 GRT	Deck equipment:	170 t pull, 300 t brake
Speed:	15 knots		Forward tugger winch
Bollard pull at MCR.	92 TBP		8/50 t
Steering pull at 10 knots:	157 tonnes		Aft tugger/windlass 8/50 t
Main dimensions:			Deck crane 24 tm
	Loa	40.55 m	Towing pins/roller
	Bmld	14.30 m	
	Dmld	5.14 m	
	Normal op.draft	6.00 m	

All the above particulars are believed to be correct, but not guaranteed