

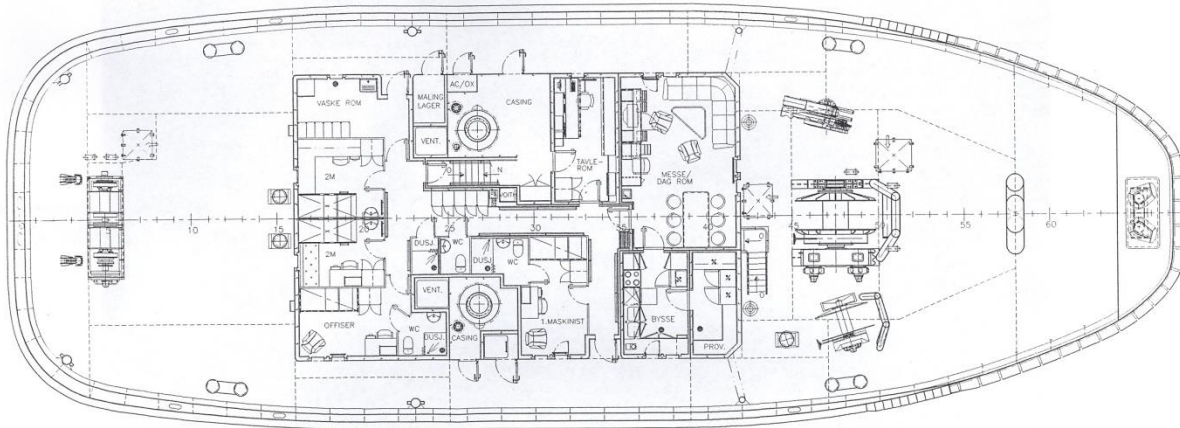


## **“Baut”**





## Fleet Specifications



<b>Type:</b>	Voith Fin First Tractor	<b>Main engines:</b>	2 x Deutz SBV 16 M 628
<b>Built:</b>	2003		6.880 kW in total
<b>Call sign:</b>	LMJY	<b>Propulsion:</b>	2 x Voith 36R6/255-2
<b>IMO no.:</b>	9287041	<b>Auxiliaries:</b>	760 kW
<b>Port of registration:</b>	Bergen	<b>Fire fighting:</b>	2 x water / foam monitors
<b>Class:</b>	DNV +1A1 – E0 – Ice C – Tug – SF Fi Fi I – Oilrec – Esc. (160t, 10kn)	<b>Towing winch:</b>	2.820 m <sup>3</sup> /hr water
<b>Tonnage:</b>	741 GRT	<b>Deck equipment:</b>	170 t pull, 300 t brake
<b>Speed:</b>	15 knots		Forward tugger winch 8/50 t
<b>Bollard pull at MCR.</b>	92 TBP		Aft tugger/windlass 8/50 t
<b>Steering pull at 10 knots:</b>	157 tonnes		Deck crane 24 tm
<b>Main dimensions:</b>			Towing pins/roller
	Loa	40.55 m	
	Bmld	14.30 m	
	Dmld	5.14 m	
	Normal op.draft	6.00 m	

*All the above particulars are believed to be correct, but not guaranteed*