



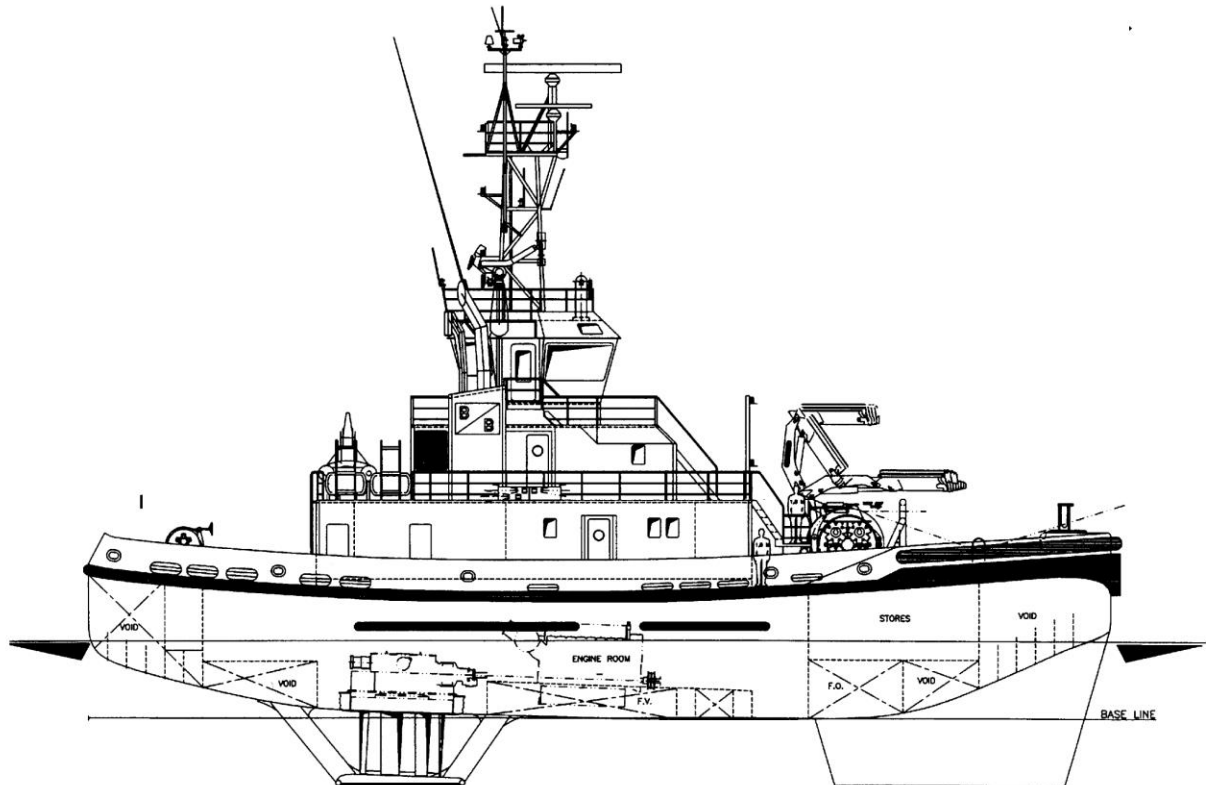
Fleet Specifications

“Belos”





Fleet Specifications



Type:	Fin First Voith Tractor	Main engines:	2 x Deutz SBV 8M 628
Built:	1999		4.624 bhp in total
Call sign:	LJXK	Propulsion:	2 x Voith 26G II/210
IMO no.:	9191905	Auxiliaries:	2 x 204 kW
Port of registration:	Brevik	Fire fighting:	2 x water / foam monitors
Class:	DNV +1A1- E0 - Ice 1C – Tug Escort (87,10;76,8)		1.400 m ³ /hr water
Tonnage:	436 GRT	Towing winch:	72 t pull, 132 t brake
Speed:	14,2 knots	Deck equipment:	Forward tugger winch 8/50 t
Bollard pull at MCR:	48 tonnes		Aft tugger / windlass 8/50 t
Steering pull at 10 knots, in compliance with DNV class notation:	87 tonnes		Crane 22 tm
Main dimensions:			Towing pins
	Loa 32.40 m		
	Bmld 11.40 m		
	Dmld 4.80 m		
	Normal op. draft 4.60 m		

All the above particulars are believed to be correct, but not guaranteed