





# Workboat "Beni"

*Towing and mooring operations, passengers transport and pilot services*



<b>Type:</b>	Damen Stan Tug 1004	<b>Main engines:</b>	Volvo D9 MH
<b>Built:</b>	2012		221 bkW (296 bhp) at 1800 rpm
<b>Call sign:</b>	LF6314	<b>Propulsion:</b>	Kaplan fixed pitch 1050 mm dia.
<b>IMO no.:</b>	-	<b>Bow thruster:</b>	Hydraulic Sleipner SH550
<b>Port of reg.:</b>	-		43 kW (58 bhp)
<b>Class:</b>	I  HULL  MACH Seagoing Launch	<b>Bilge / Fire fighting:</b>	Azcue CA50/2A 9 m <sup>3</sup> /h with hydrants in engine room and on deck emergency bilge pump
<b>Displacement:</b>	± 27 t	<b>Towing/AH winch:</b>	Hydraulic winch, 4 t pull (1.lay)
<b>Speed:</b>	8.9 knots	<b>Deck equipment:</b>	Towing hook 7 t SWL (Mampaey Disc type) Telescopic deck crane 3 tm (SL-3000MT/3)
<b>Bollard pull:</b>	4,1 TBP		
<b>Fuel capacity:</b>	1,62 m <sup>3</sup>		
<b>Main dimensions:</b>	Length overall 10,67 m Beam overall 4,52 m Depth at sides 2,15 m Draught aft (~) 1,70 m		

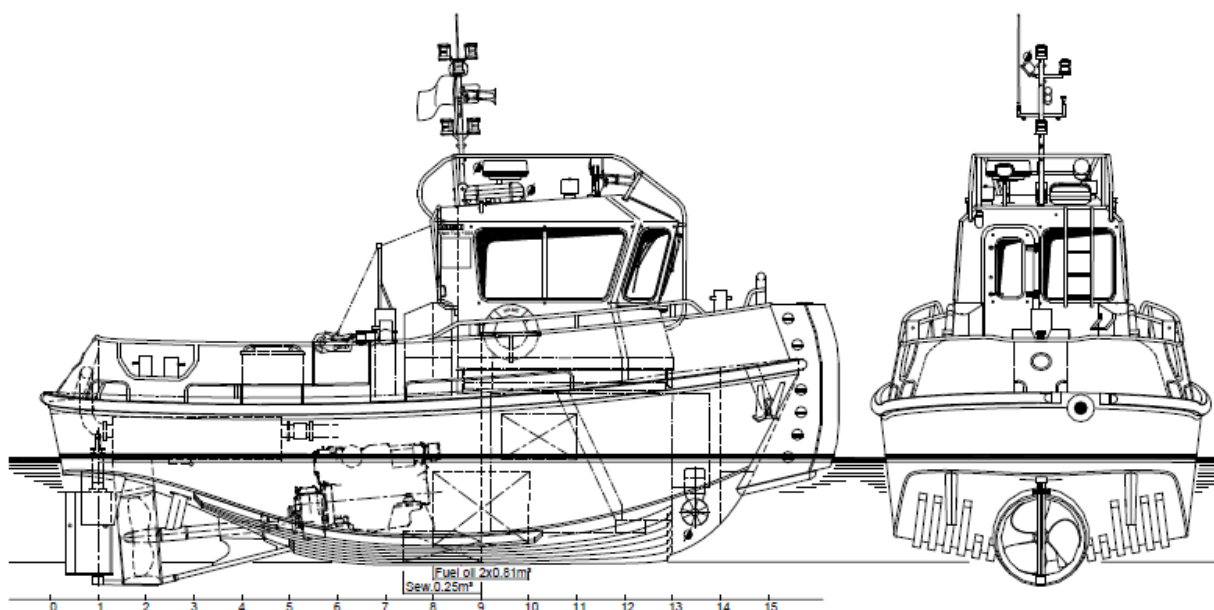
*All the above particulars are believed to be correct, but not guaranteed*



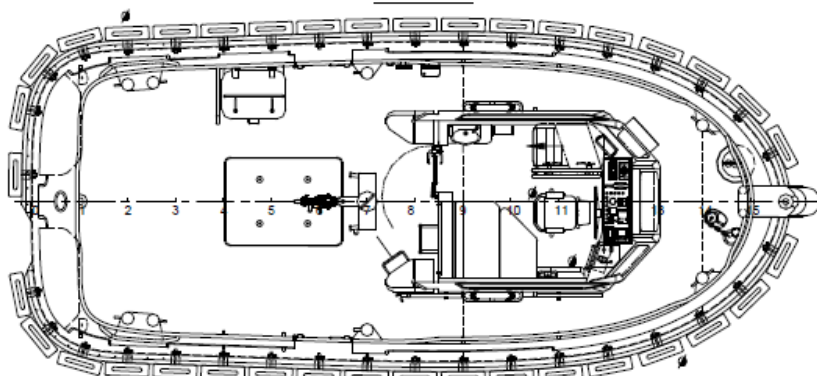
## Fleet Specifications

### GENERAL ARRANGEMENT

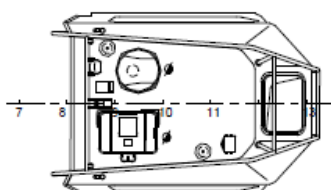
*Note: without deck crane and winch mounted*



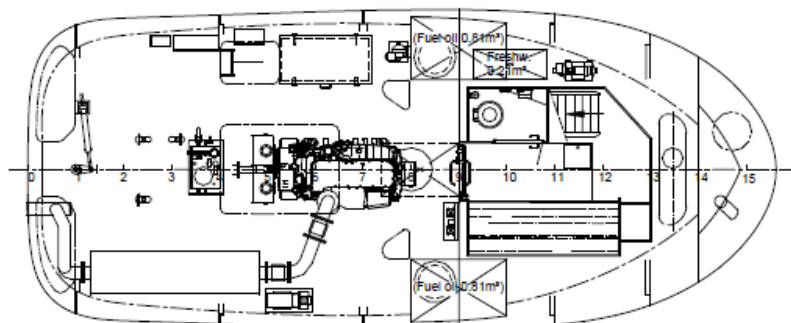
Maindeck



Topdeck



Below Maindeck





## Fleet Specifications

LOAD DIAGRAM SL-3000MT/3

