



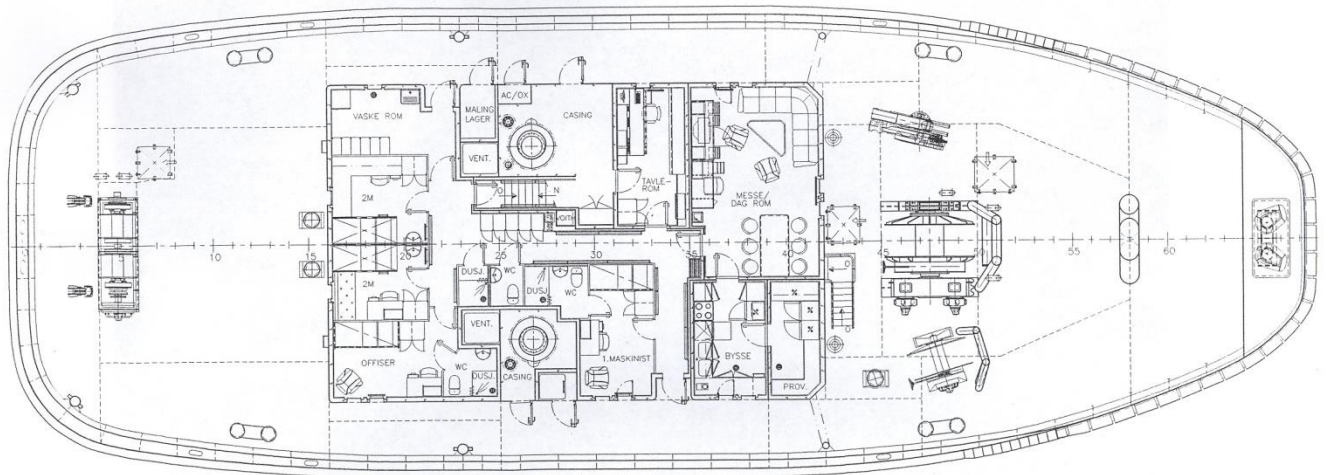
## Fleet Specifications

# “Boris”





## Fleet Specifications



<b>Type:</b>	Voith Fin First Tractor	<b>Main engines:</b>	2 x Deutz SBV 16 M 628
<b>Built:</b>	2006		9.729 bhp in total
<b>Call sign:</b>	LNMS	<b>Propulsion:</b>	Voith 36R6/255-2
<b>IMO no.:</b>	9334753	<b>Auxiliaries:</b>	720 kW
<b>Port of registration:</b>	Hammerfest	<b>Fire fighting:</b>	2 x water / foam monitors
<b>Class:</b>	DNV +1A1 - E0 - Ice C – Tug – SF FiFi I – Oilrec – Esc. (160t, 10kn)	<b>Towing winch:</b>	2.800 m <sup>3</sup> /hr water 170 t pull, 300 t brake
<b>Tonnage:</b>	773 GRT	<b>Deck equipment:</b>	Forward tugger winch 8/50 t Aft tugger/windlass 8/50 t Deck crane 24 tm Towing pins
<b>Speed:</b>	15 knots		
<b>Bollard pull at MCR.</b>	95 TBP		
<b>Steering pull at 10 knots:</b>	160 tonnes		
<b>Main dimensions:</b>	Loa 40.55 m		
	Bmld 14.30 m		
	Dmld 5.14 m		
	Normal op.draft 6.00 m		

*All the above particulars are believed to be correct, but not guaranteed*